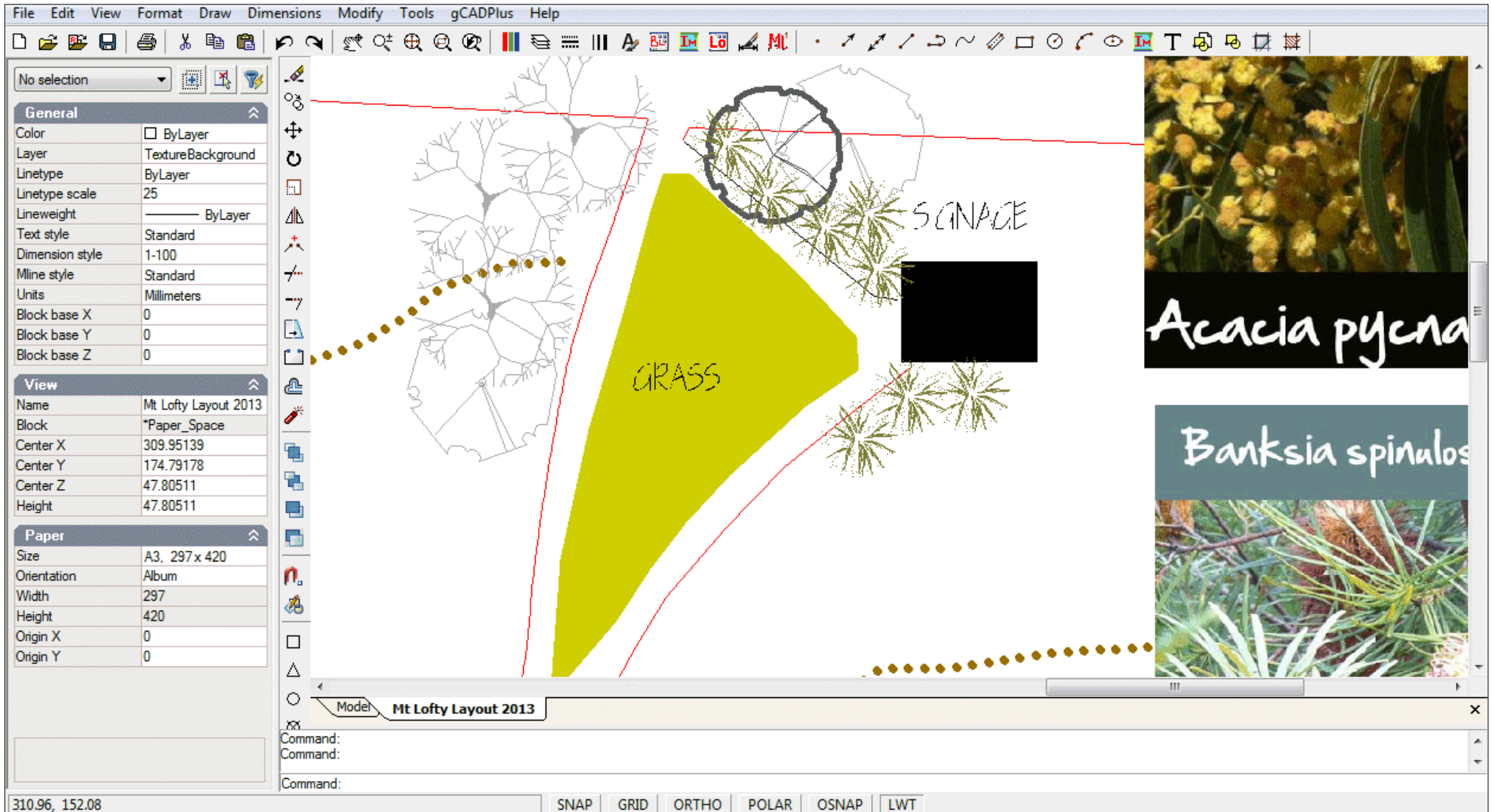


## Managing linetypes

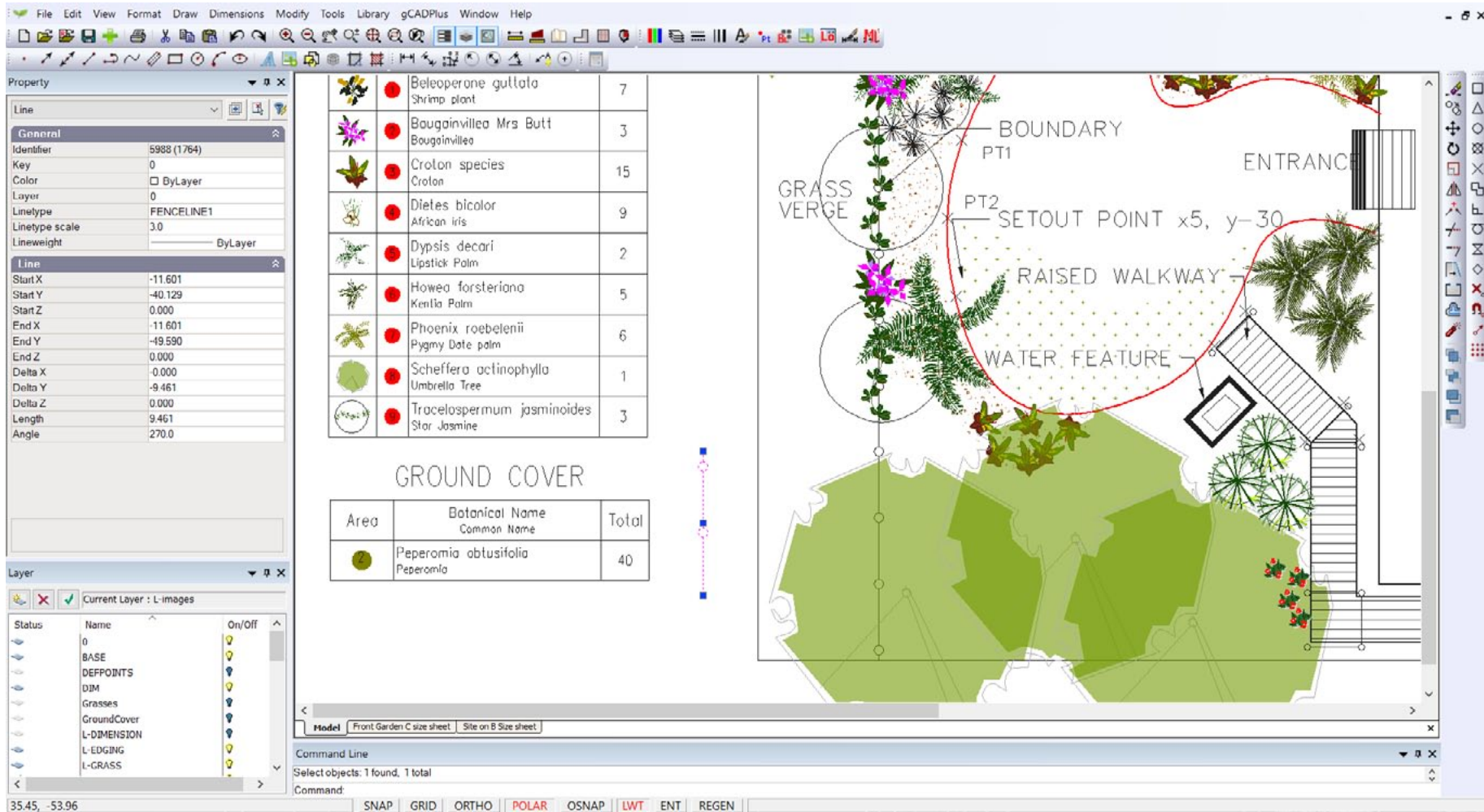
Lines and other entities drawn with different patterns clarity to landscape drawings. For example, in the image below, dotted and dashed lines are used to prepare a map of bush walking trail.



*Here lines in a map for bush walkers have been assigned different patterns.*

## Default settings

By default, whenever a gCADPlus entity is placed into the drawing editor, the entity is assigned the linetype termed continuous. This applies to any entity, not only lines. However, gCADPlus also allows an entity to have a different linetype pattern. For example, in the figure below, a line representing the front boundary of a site has had a particular linetype pattern called FENCELINE2 applied to it and the result is a line drawn with circles inside the line at regular intervals.



*The line representing the boundary of the site has a linetype pattern applied.*

## Linetype patterns

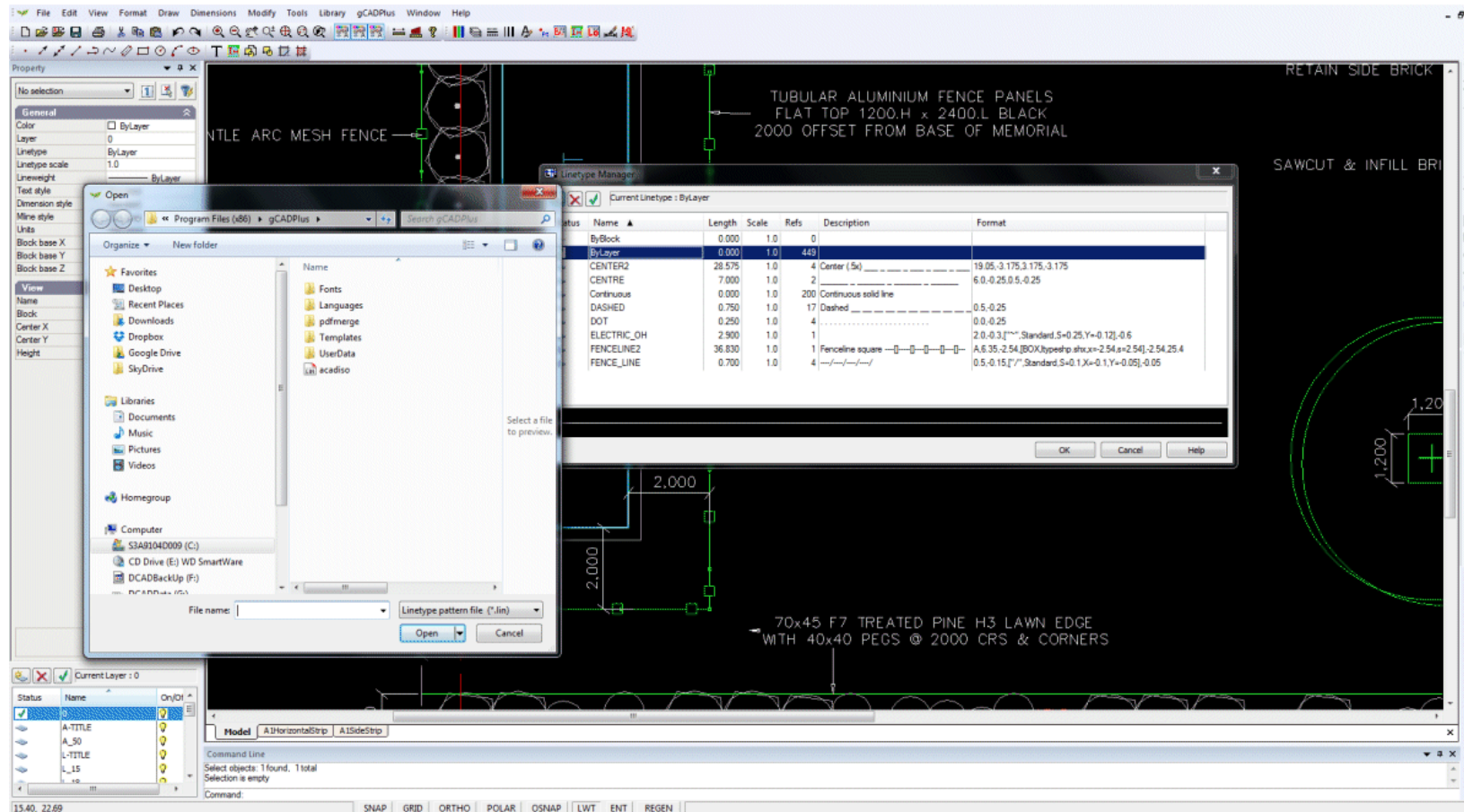
Linetype patterns assigned to an entity can consist of combinations of dashes, dots, spaces and symbols. These are defined by a linetype file that is a simple text file with the extension .lin.

## Default linetype styles

When you create a new drawing, it already contains linetypes named “ByLayer”, “ByBlock”, and, “Continuous” irrespective of the status of the .lin file. These styles cannot be removed.

## Loading a new linetype file

New linetypes are available by loading a new linetype file via the Linetypes option under the Format drop down menu. As shown in the figure below, it possible to click on the new icon and browsing to the location of a different .lin file. In this case, a linetype file called



Loading a new linetype file.

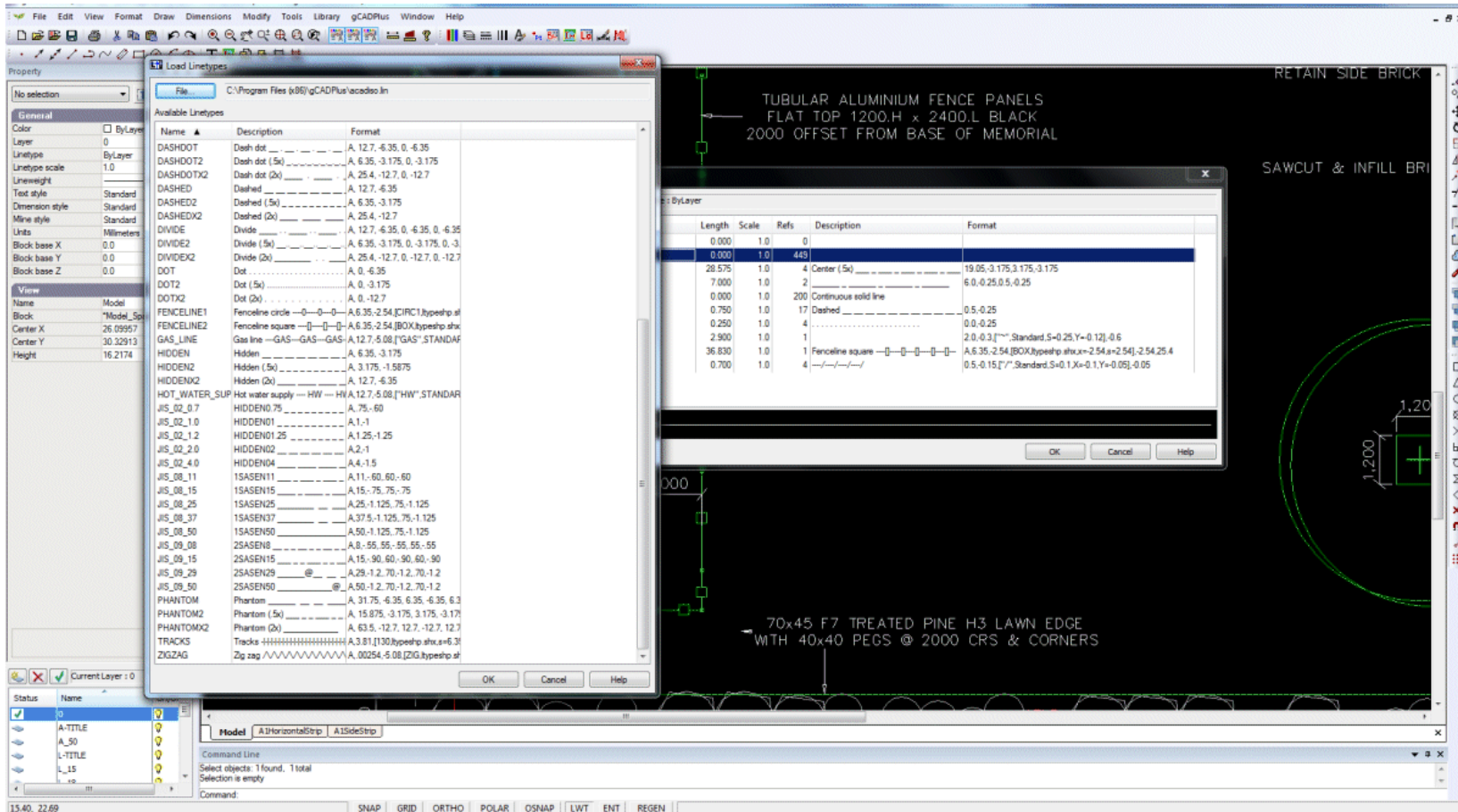
acadiso.lin is about to be selected.

Tip: gCADPlus can use any linetype file from the AutoCAD world.



The figure below shows a long list of linetypes that became available once the acadiso.lin file was loaded. Any linetype from that list can be added to the drawing environment.

*Tip: For optimum performance, it is recommended that you load only those linetypes you are likely to use. This can be done by setting up a template drawing with your linetype patterns. These will then be available for new work without having to load them each time.*



*Loading additional linetype patterns.*

*Tip: The LINETYPE command can also be typed from the keyboard to load a different linetype file.*

*Tip: It is possible to select and load multiple linetypes from the linetype file by holding the shift or control key when selecting.*

Changing linetype properties of entities in a drawing

Select the entity and change the linetype value in the Properties box.

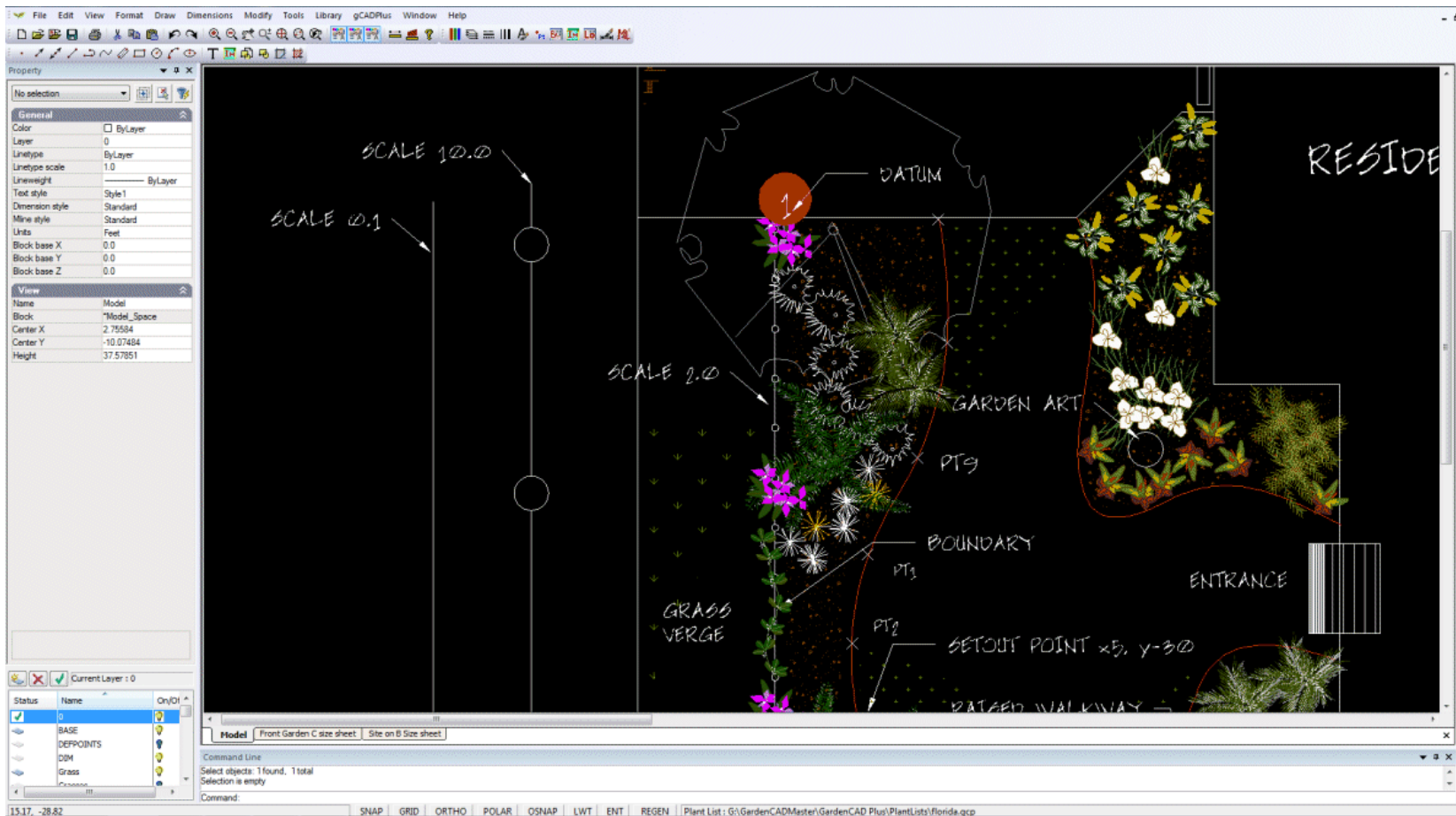
## Changing current linetype style

Change the linetype style via the Properties box or by the linetype icon on the toolbar.

By default, the metric version of gCADPlus will load the file acadiso.lin and the Imperial version acad.lin. Both linetype files should be available to you by browsing to the gCADPlus My Documents folder, no matter which version of gCADPlus you use.

## The importance of linetype scale

It may be the case that when you load a new linetype and apply it, the line appears to be drawn with a continuous pattern. This effect shows in the figure below. Often the pattern will not be seen until you zoom in on the line. In order for the line pattern to show properly, the linetype scale must be varied. There are no hard and fast rules on what scale is appropriate because the scale will vary according to units in use (mm, decimal feet) and the size of the layout sheet.



*The influence of linetype scale on pattern.*